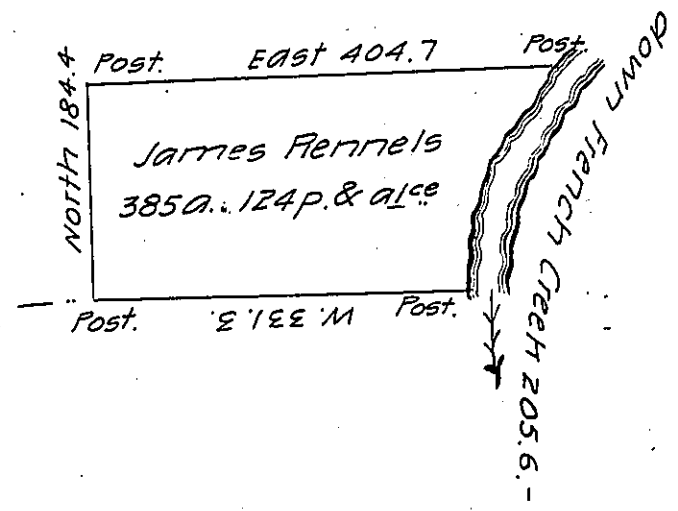


Fredrich Smith

David Claypole



River Courses beg^d

- S. 32 1/2 W. 134.6
- S. 2° E 29.
- S. 3 W. 42.
- 205.6 P.

Situate on and adjoining the West side of French Creek in
 Allegheny County Containing 385 acres and 124 perches and all^o
 of Six P. Cent for roads &c^e surveyed the 12th day of October 1794 in
 pursuance of a Warrant dated the 13th April 1792.

Wm. Power D.Y.S.

To Daniel Brodhead Esqr.

Surveyor General.

IN TESTIMONY that the above is a copy of the original remaining on file in
 the Department of Internal Affairs of Pennsylvania, made
 conformably to an Act of Assembly approved the 16th day of
 February, 1833, I have hereunto set my Hand and caused
 the Seal of said Department to be affixed at Harrisburg,
 this thirty-first day of July 1906.

Lea C. D. Brown
 Secretary of Internal Affairs.